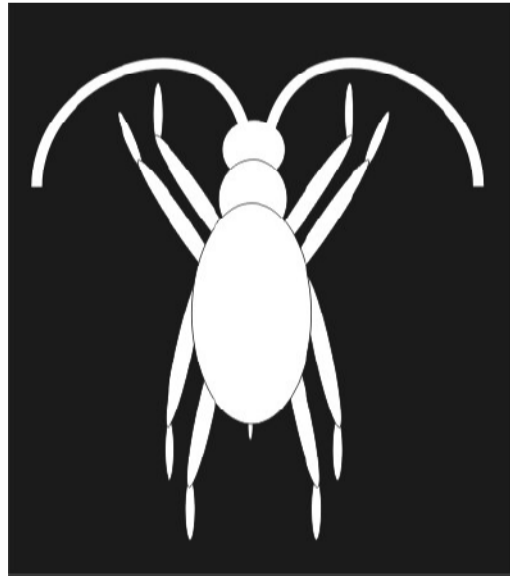


Troglobite

Animals that live in caves in complete darkness their entire lives are called troglobites. These animals have evolved to live in such a strange environment and many look like no other animals on earth.

During a survey a new troglobite was discovered. The cave researcher took a photograph of the animal.

Using this image and a ruler, write a detailed description of this new animal. You will need to describe each body part, its length and shape and the direction it points. Your description should be good enough for another person to be able to draw the troglobite from your notes!



Use the following description to sketch this troglobite found in the nearby cave over 100 years ago. Use the back of this page.

"The animal was 25mm long and made up of three equal round segments. Each segment had two pairs of legs. Each leg was made up of two segments. The first segment attached to the body was 15mm long and only 3 mm wide. Attached to it was a thinner segment that was 10mm long and only 2 mm wide. On the end of each of these end segments was a small round disk. Two feelers came from the end of the head body segment. These were 30mm long and curved back around the animals body so that they did not touch the animals legs. The feelers were less than a millimeter thick, but hairy."